

Multiple Pin Headers

With Solid Glass Insulators



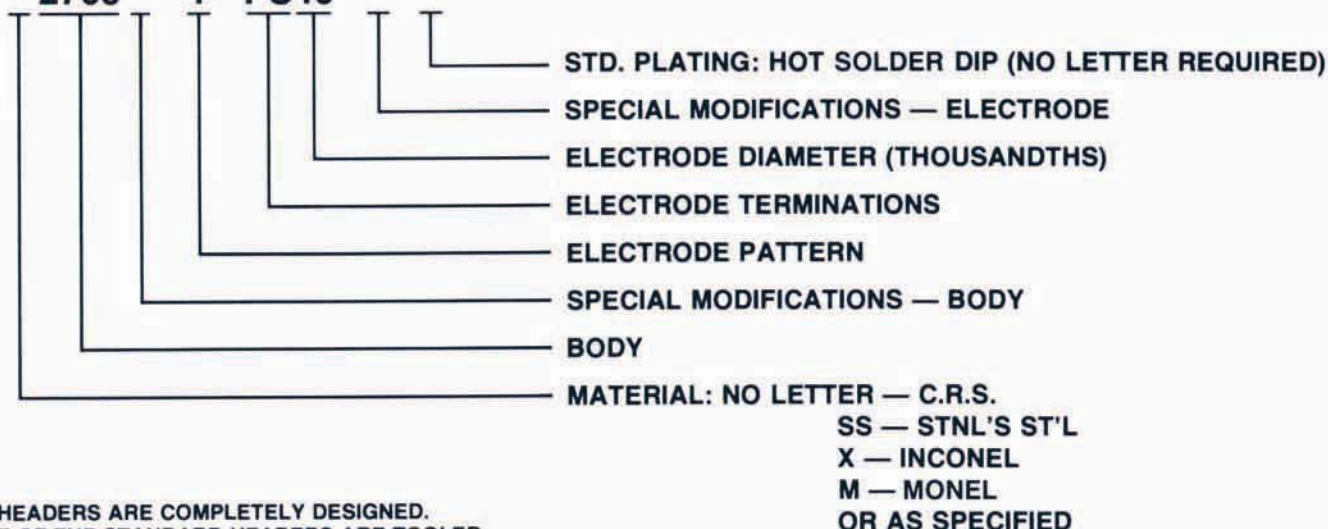
HERMETIC SEAL CORP.

AN HCC INDUSTRIES
COMPANY

hcc

NUMBERING SYSTEM

* 2709 * - 4 - PS40 - * - *



ALL HEADERS ARE COMPLETELY DESIGNED.
 MOST OF THE STANDARD HEADERS ARE TOOLED.
 PLEASE CONSULT FACTORY FOR FURTHER DETAILS.

MULTI HEADERS



For complete flexibility of application Hermetic Seal Corporation multi pin header line is the answer. Solid glass insulating material for high voltage requirements plus individual glass insulators for durable high pressure needs encompasses nearly every possible design criteria imaginable. With selections of termination configurations and materials the multi header line is unsurpassed.

GENERAL SPECIFICATIONS

SEAL (HERMETICITY)
 LEAKAGE RATE LESS THAN
 1×10^{-8} cc/sec AT 15 P.S.I.

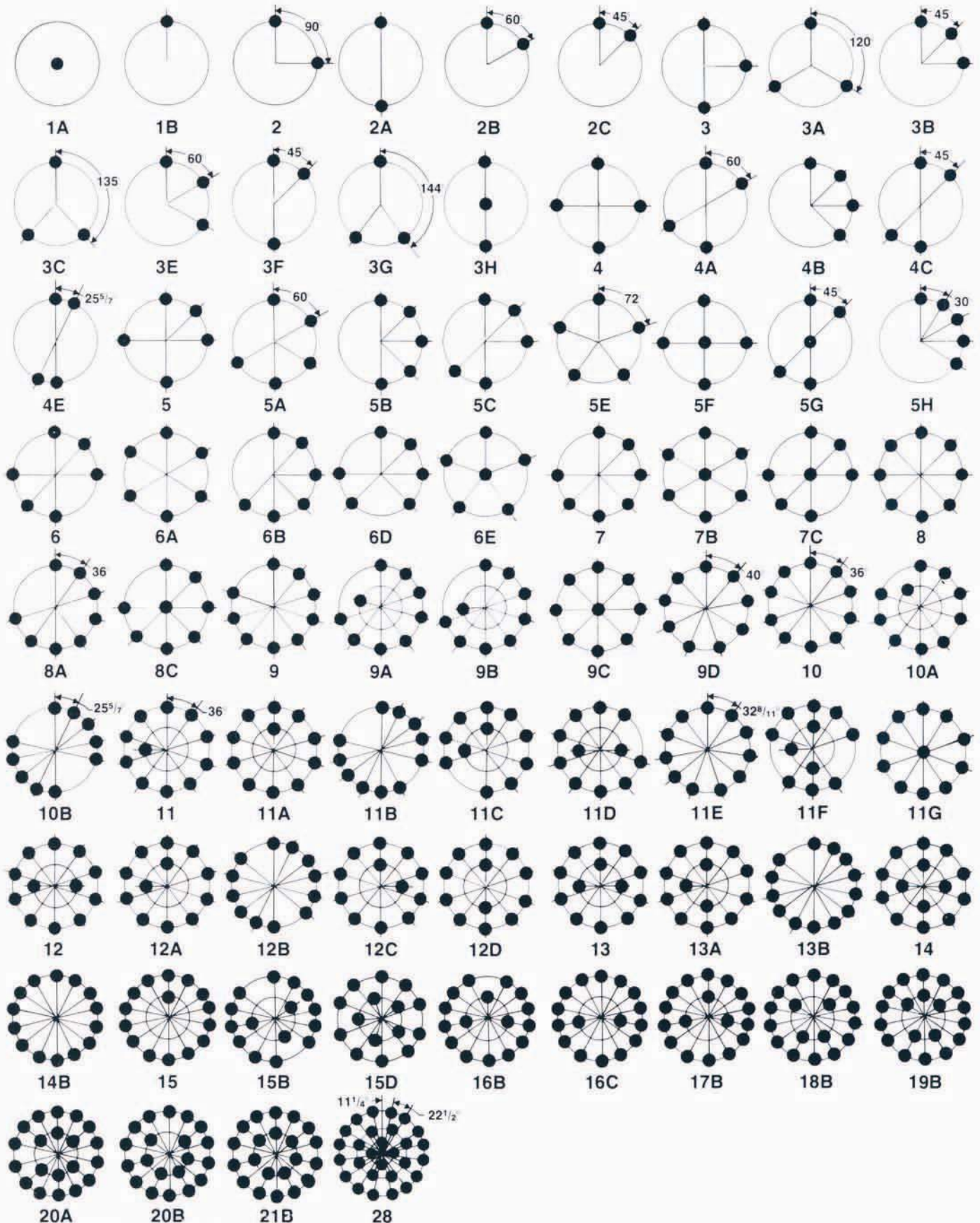
INSULATION RESISTANCE
 GREATER THAN 10,000 MEGOHMS
 AT 500 VDC PER MIL-STD-202.
 METHOD 302.

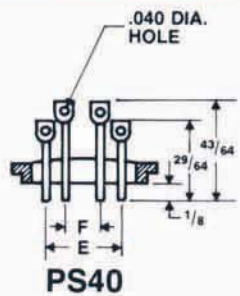
THERMAL SHOCK
 NO EVIDENCE OF DAMAGE DETRIMENTAL
 TO THE OPERATION OF HEADER AT
 -65°C (-85°F) TO $+125^{\circ}\text{C}$ (257°F)

CORROSION
 HEADERS WILL MEET SALT SPRAY TEST
 PER MIL-STD-202, METHOD 101.
 (Depending on Plating)

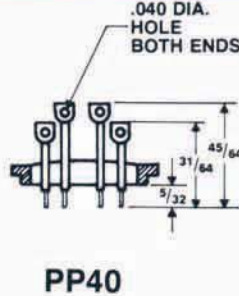
HERMETIC SEAL CORPORATION

4232 TEMPLE CITY BOULEVARD, ROSEMEAD, CA 91770-1592
 TEL: (626) 443-8931 / (626) 443-6610 / www.hccindustries.com

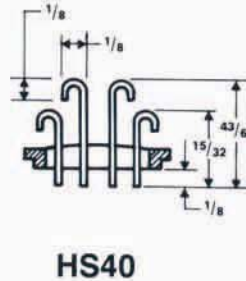




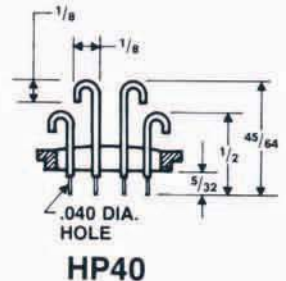
PS40



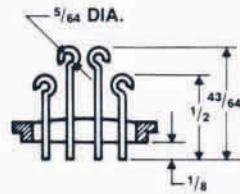
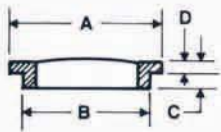
PP40



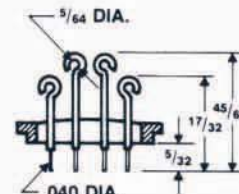
HS40



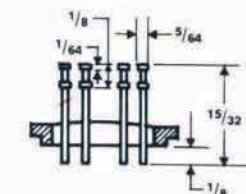
HP40



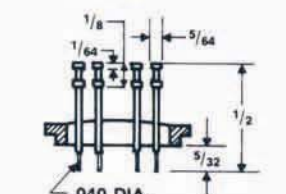
LS40



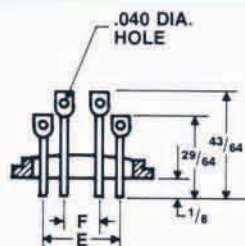
LP40



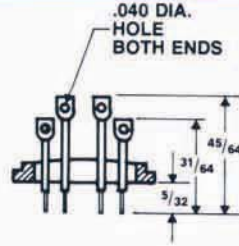
THS40



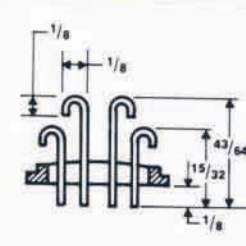
THP40



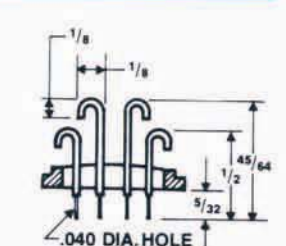
PS40R



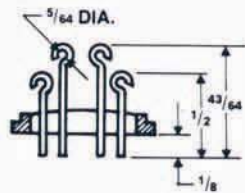
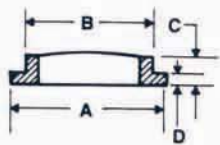
PP40R



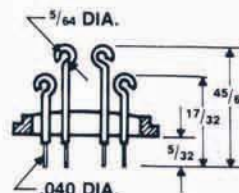
HS40R



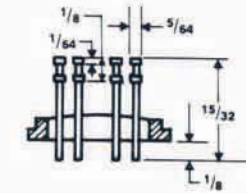
HP40R



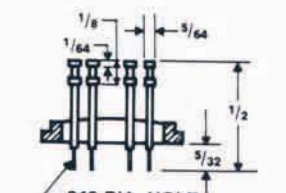
LS40R



LP40R



THS40R



THP40R

SOLID GLASS — .040 DIA. ELECTRODES

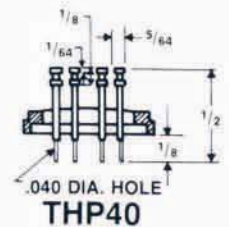
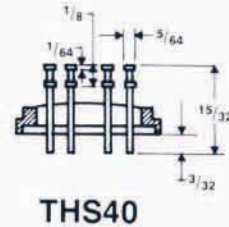
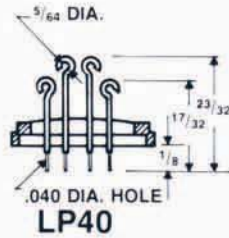
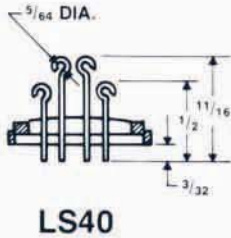
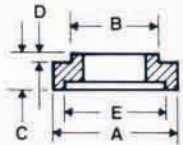
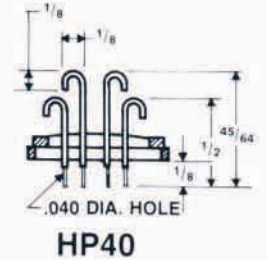
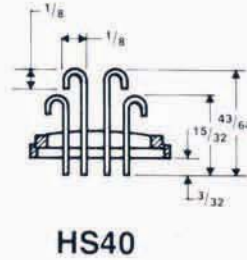
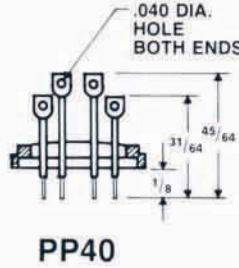
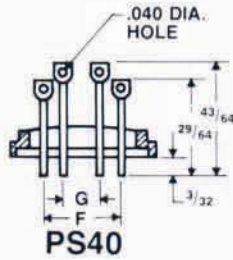
Body	A	B	C	D	E	F	Voltage R.M.S.	Types Available	Patterns Available
2709	.375	.343	.100	.050	.150	—	1500	See Below*	2-8, 1A-6A, 1B-7B, 2C-5C, 6D, 3E, 5E, 6E, 3F, 5F, 3G, 5G, 3H
2711	.600	.560	.094	.031	.310	—	1500	See Below*	2-10, 1A-6A, 8A, 1B-7B, 2C-5C, 7C-9C, 6D, 3E, 5E, 6E, 3F, 5F, 3G, 5G, 11G, 3H
2751	.625	.590	.094	.031	.375	—	1500	All Shown	2-10, 1A-6A, 8A, 1B-7B, 2C-5C, 7C-9C, 6D, 3E, 5E, 6E, 3F, 5F, 3G, 5G, 11G, 3H
2761	.730	.620	.094	.031	.375	—	2500	All Shown	2-10, 1A-6A, 8A, 1B-7B, 2C-5C, 7C-9C, 6D, 3E, 5E, 6E, 3F, 5F, 3G, 5G, 11G, 3H
2775	.800	.770	.094	.031	.468	—	2200	All Shown	2-10, 1A-6A, 8A, 1B-7B, 2C-5C, 7C-9C, 6D, 3E, 5E, 6E, 3F, 5F, 3G, 5G, 11G, 3H
					.498	—	1800	All Shown	2-10, 1A-6A, 8A, 1B-7B, 2C-5C, 7C-9C, 6D, 3E, 5E, 6E, 3F, 5F, 3G, 5G, 11G, 3H
					.498	.212	1800	All Shown	11-14, 9A-13A, 9B, 11C, 12C, 11D, 12D, 11F
2772	.900	.840	.094	.062	.468	—	2200	All Shown	2-10, 1A-6A, 8A, 1B-7B, 2C-5C, 7C-9C, 6D, 3E, 5E, 6E, 6E, 3F, 5F, 3G, 5G, 11G, 3H
					.498	.212	1800	All Shown	2-14, 1A-6A, 8A-13A, 1B-7B, 9B, 2C-5C, 7C-9C, 11C, 12C, 6D, 11D, 12D, 3E, 5E, 6F, 3F, 5F, 11F, 3G, 5G, 11G, 3H
27012	1.000	.960	.100	.062	.468	—	2200	All Shown	2-10, 1A-6A, 8A, 1B-7B, 2C-5C, 7C-9C, 6D, 3E, 5E, 6E, 3F, 5F, 3G, 5G, 11G, 3H
					.498	.212	1800	All Shown	2-14, 1A-6A, 8A-13A, 1B-7B, 9B, 2C-5C, 7C-9C, 11C, 12C, 6D, 11D, 12D, 3E, 5E, 6E, 3F, 5F, 11F, 3G, 5G, 11G, 3H
					.656	.312	2000	All Shown	15, 1A, 2A, 20A, 1B, 10B-21B, 16C, 4E, 3H
2794	1.062	.998	.094	.031	.656	.312	2000	All Shown	15, 1A, 2A, 20A, 1B, 10B-21B, 16C, 4E, 3H

*TYPES AVAILABLE FOR BODY 2709 AND BODY 2711
PS40, PS40R, PP40, PP40R, HS40, HS40R, HP40, HP40R

HERMETIC SEAL CORPORATION

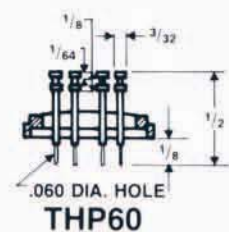
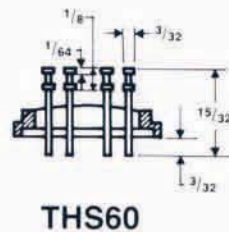
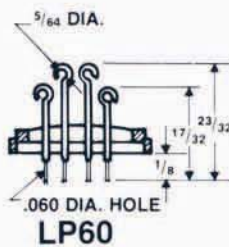
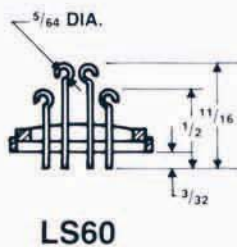
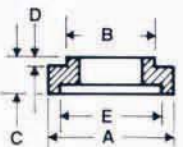
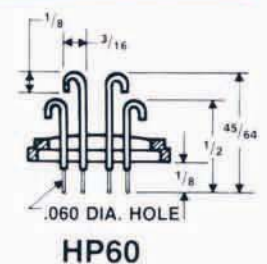
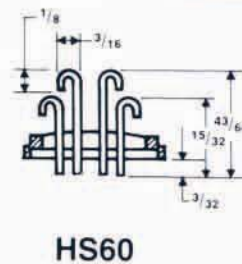
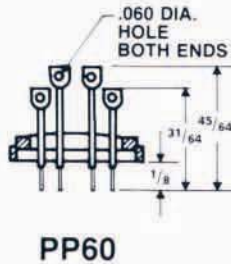
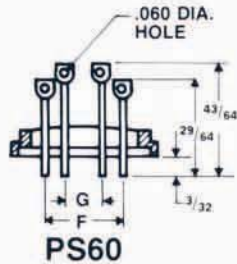
4232 TEMPLE CITY BOULEVARD, ROSEMEAD, CA 91770-1592
TEL: (626) 443-8931 / (626) 443-6610 / www.hccindustries.com

TOLERANCE EXCEPT AS SPECIFIED
DECIMALS ±.005 FRACTIONS ± 1/32



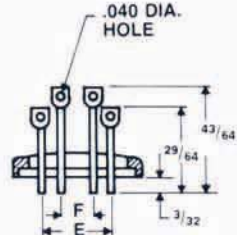
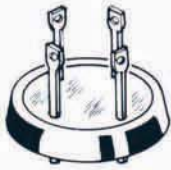
SOLID GLASS — .040 DIA. ELECTRODES

Body	A	B	C	D	E	F	G	Voltage R.M.S.	Types Available	Patterns Available
2732	.800	.770	.156	.062	.770	.375	—	2500	All Shown	2-10, 1A-6A, 8A, 1B-7B, 2C-5C, 7C-9C, 6D, 3E, 5E, 6E, 3F, 5F, 3G, 5G, 11G, 3H
						.468	—	2200	All Shown	2-10, 1A-6A, 8A, 1B-7B, 2C-5C, 7C-9C, 6D, 3E, 5E, 6E, 3F, 5F, 3G, 5G, 11G, 3H
						.498	.212	1800	All Shown	2-14, 1A-6A, 8A-13A, 1B-7B, 9B, 2C-5C, 7C-9C, 11C, 12C, 6D, 11D, 12D, 3E, 5E, 6E, 3F, 5F, 11F, 3G, 5G, 11G, 3H
2784	.900	.831	.156	.062	.862	.468	—	2200	All Shown	2-10, 1A-6A, 8A, 1B-7B, 2C-5C, 7C-9C, 6D, 3E, 5E, 6E, 3F, 5F, 3G, 5G, 11G, 3H
						.498	.212	1800	All Shown	2-14, 1A-6A, 8A-13A, 1B-7B, 9B, 2C-5C, 7C-9C, 11C, 12C, 6D, 11D, 12D, 3E, 5E, 6E, 3F, 5F, 11F, 3G, 5G, 11G, 3H
						.550	.250	1750	All Shown	15, 1A, 2A, 20A, 1B, 10B-21B, 16C, 4E, 3H
2785	1.000	.966	.156	.062	.966	.656	.312	2000	All Shown	15, 1A, 2A, 20A, 1B, 10B-21B, 16C, 4E, 3H

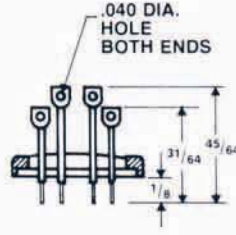


SOLID GLASS — .060 DIA. ELECTRODES

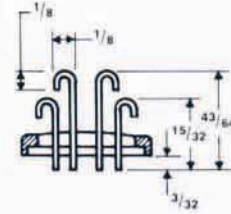
Body	A	B	C	D	E	F	G	Voltage R.M.S.	Types Available	Patterns Available
2732	.800	.770	.156	.062	.770	.375	—	1800	All Shown	2-8, 1A-6A, 1B-7B, 2C-9C, 3E, 5E, 6E, 3F, 5F, 3G, 3H
						.468	—	1500	All Shown	2-8, 1A-6A, 1B-7B, 2C-9C, 3E, 5E, 6E, 3F, 5F, 3G, 3H
						.498	.212	1800	All Shown	2-14, 1A-6A, 8A-13A, 1B-7B, 9B, 2C-5C, 7C-9C, 11C, 12C, 6D, 11D, 12D, 3E, 5E, 6E, 3F, 5F, 11F, 3G, 5G, 11G, 3H
2784	.900	.831	.156	.062	.862	.468	—	1500	All Shown	2-8, 1A-6A, 1B-7B, 2C-9C, 3E, 5E, 6E, 3F, 5F, 3G, 3H
						.498	.212	1800	All Shown	2-14, 1A-6A, 8A-13A, 1B-7B, 9B, 2C-5C, 7C-9C, 11C, 12C, 6D, 11D, 12D, 3E, 5E, 6E, 3F, 5F, 11F, 3G, 5G, 11G, 3H
						.550	.250	1750	All Shown	2-14, 1A-6A, 8A-13A, 1B-7B, 9B, 2C-5C, 7C-9C, 11C, 12C, 6D, 11D, 12D, 3E, 5E, 6E, 3F, 5F, 11F, 3G, 5G, 11G, 3H
2785	1.000	.966	.156	.062	.966	.656	.312	1500	All Shown	15, 1A, 2A, 20A, 1B, 10B-21B, 16C, 4E, 3H



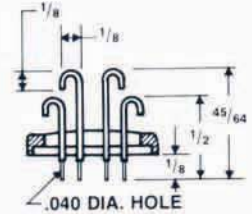
PS40



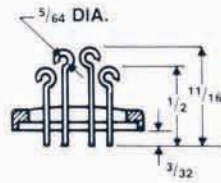
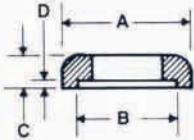
PP40



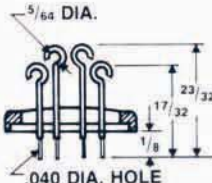
HS40



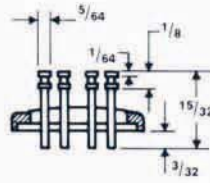
HP40



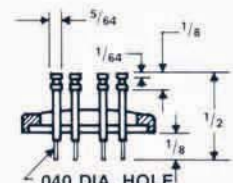
LS40



LP40



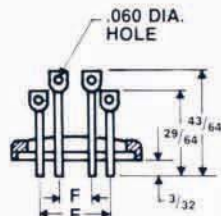
THS40



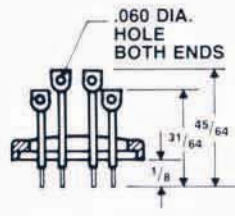
THP40

SOLID GLASS — .040 DIA. ELECTRODES

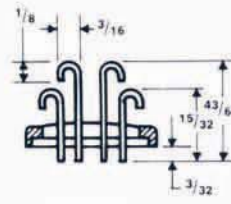
Body	A	B	C	D	E	F	Voltage R.M.S.	Types Available	Patterns Available
2752	.600	.570	.150	.045	.310	—	1800	All Shown	2-10, 1A-6A, 8A, 1B-7B, 2C-5C, 7C-9C, 6D, 3E, 5E, 6E, 3F, 5F, 3G, 5G, 11G, 3H
					.310	.150	1800	All Shown	2-14, 1A-6A, 8A-13A, 1B-7B, 9B, 2C-5C, 7C-9C, 11C, 12C, 6D, 11D, 12D, 3E, 5E, 6E, 3F, 5F, 11F, 3G, 5G, 11G, 3H
2727	.800	.770	.145	.050	.468	—	2900	All Shown	2-10, 1A-6A, 8A, 1B-7B, 2C-5C, 7C-9C, 6D, 3E, 5E, 6E, 3F, 5F, 3G, 5G, 11G, 3H
					.498	.212	2700	All Shown	2-14, 1A-6A, 8A-13A, 1B-7B, 9B, 2C-5C, 7C-9C, 11C, 12C, 6D, 11D, 12D, 3E, 5E, 6E, 3F, 5F, 11F, 3G, 5G, 11G, 3H
2722	.900	.870	.150	.045	.468	—	2200	All Shown	2-10, 1A-6A, 8A, 1B-7B, 2C-5C, 7C-9C, 6D, 3E, 5E, 6E, 3F, 5F, 3G, 5G, 11G, 3H
					.498	.212	1800	All Shown	2-14, 1A-6A, 8A-13A, 1B-7B, 9B, 2C-5C, 7C-9C, 11C, 12C, 6D, 11D, 12D, 3E, 5E, 6E, 3F, 5F, 11F, 3G, 5G, 11G, 3H
27022	1.000	.970	.145	.045	.656	.312	2000	All Shown	15, 1A, 2A, 20A, 1B, 10B-21B, 16C, 4E, 3H



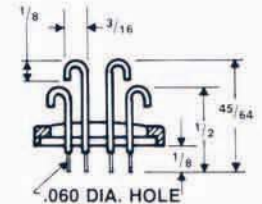
PS60



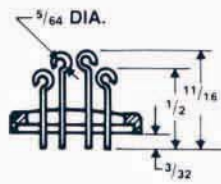
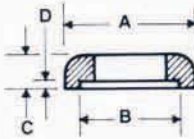
PP60



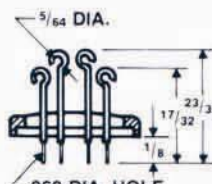
HS60



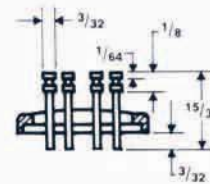
HP60



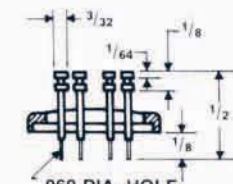
LS60



LP60



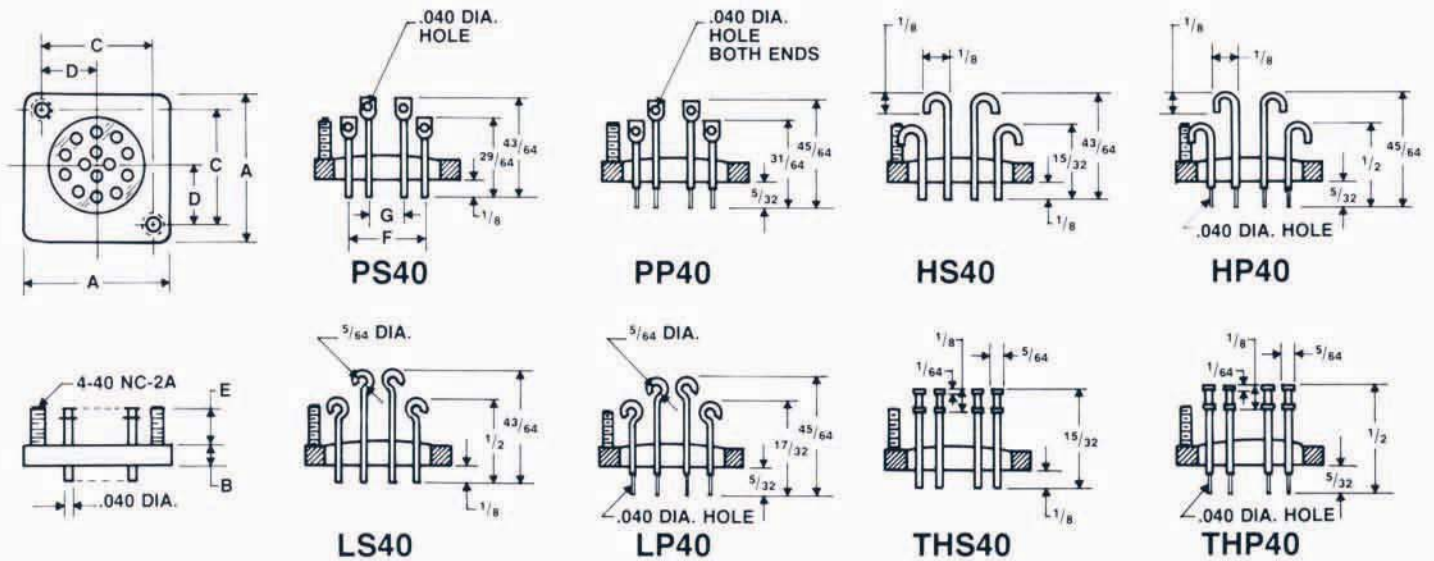
THS60



THP60

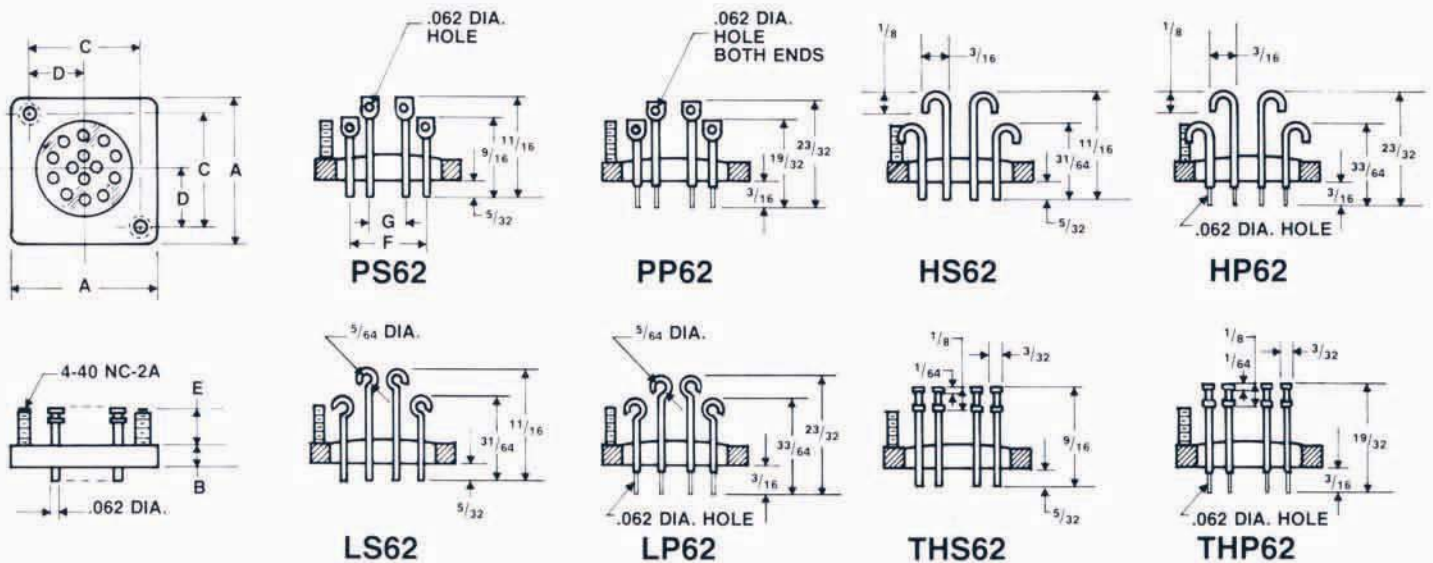
SOLID GLASS — .060 DIA. ELECTRODES

Body	A	B	C	D	E	F	Voltage R.M.S.	Types Available	Patterns Available
2752	.600	.570	.150	.045	.310	—	—	All Shown	2-8, 1A-6A, 1B-7B, 2C-9C, 3E, 5E, 6E, 3F, 5F, 3G, 3H
2727	.800	.770	.145	.050	.498	.212	1800	All Shown	2-14, 1A-6A, 8A-13A, 1B-7B, 9B, 2C-5C, 7C-9C, 11C, 12C, 6D, 11D, 12D, 3E, 5E, 6E, 3F, 5F, 11F, 3G, 5G, 11G, 3H
2722	.900	.870	.150	.045	.468	—	1500	All Shown	2-8, 1A-6A, 1B-7B, 2C-9C, 3E, 5E, 6E, 3F, 5F, 3G, 3H
					.498	.212	1800	All Shown	2-14, 1A-6A, 8A-13A, 1B-7B, 9B, 2C-5C, 7C-9C, 11C, 12C, 6D, 11D, 12D, 3E, 5E, 6E, 3F, 5F, 11F, 3G, 5G, 11G, 3H
27022	1.000	.970	.145	.045	.656	.312	1500	All Shown	15, 1A, 2A, 20A, 1B, 10B-21B, 16C, 4E, 3H



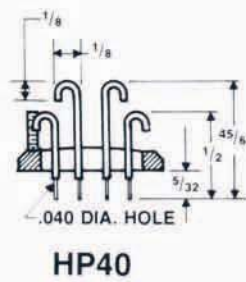
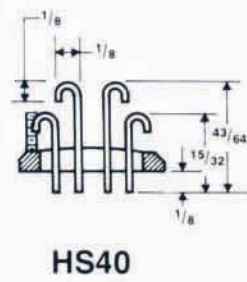
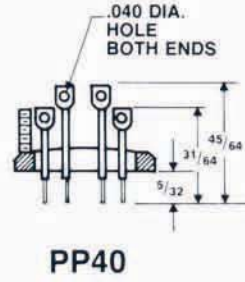
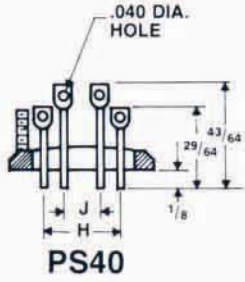
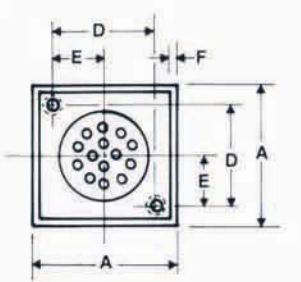
SOLID GLASS — .040 DIA. ELECTRODES

Body	A	B	C	D	E	F	G	Voltage R.M.S.	Types Available	Patterns Available
2815	.900	.094	.750	.375	.375	.468	—	2,200	All Shown	2-10, 1A-6A, 8A, 1B-7B, 2C-5C, 7C-9C, 6D, 3E, 5E, 6E, 3F, 5F, 3G, 5G, 11G, 3H
						.468	.250	1,500	All Shown	11-14, 9A-13A, 9B, 11C, 12C, 11D, 12D, 11F
2827	.956	.075	.531	.265	.375	.375	—	1,500	All Shown	2-10, 1A-6A, 8A, 1B-7B, 2C-5C, 7C-9C, 6D, 3E, 5E, 6E, 3F, 5F, 3G, 5G, 11G, 3H
2842	1.000	.094	.842	.421	.250	.468	—	2,200	All Shown	2-10, 1A-6A, 8A, 1B-7B, 2C-5C, 7C-9C, 6D, 3E, 5E, 6E, 3F, 5F, 3G, 5G, 11G, 3H
						.468	.250	1,500	All Shown	11-14, 9A-13A, 9B, 11C, 12C, 11D, 12D, 11F



SOLID GLASS — .062 DIA. ELECTRODES

Body	A	B	C	D	E	F	G	Voltage R.M.S.	Types Available	Patterns Available
2815	.900	.094	.750	.375	.375	.468	—	1,500	All Shown	2-8, 1A-6A, 1B-7B, 2C-9C, 3E, 5E, 6E, 3F, 5F, 3G, 3H
2827	.956	.075	.531	.265	.375	.375	—	1,800	All Shown	2-8, 1A-6A, 1B-7B, 2C-9C, 3E, 5E, 6E, 3F, 5F, 3G, 3H
2842	1.000	.094	.842	.421	.250	.468	—	1,500	All Shown	2-8, 1A-6A, 1B-7B, 2C-9C, 3E, 5E, 6E, 3F, 5F, 3G, 3H

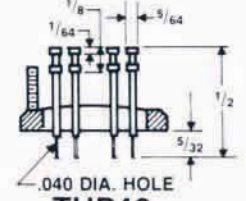
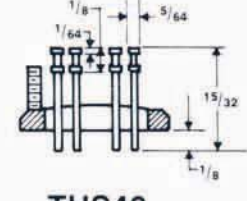
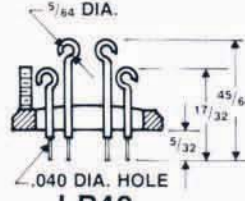
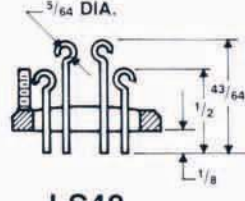
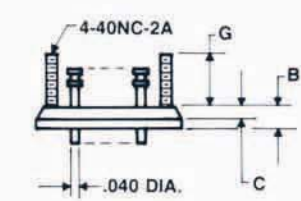


PS40

PP40

HS40

HP40



LS40

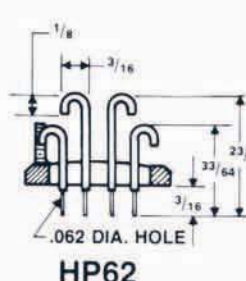
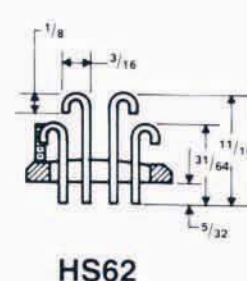
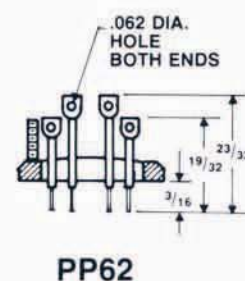
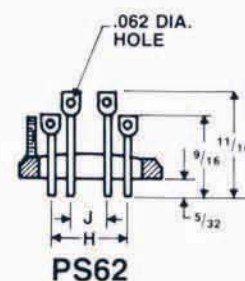
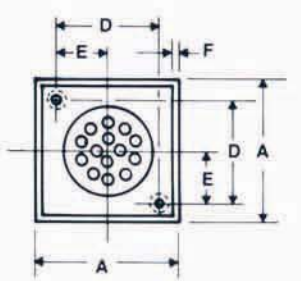
LP40

THS40

THP40

SOLID GLASS — .040 DIA. ELECTRODES

Body	A	B	C	D	E	F	G	H	J	Voltage R.M.S.	Types Available	Patterns Available
2809	.938	.093	.062	.750	.375	.031	.375	.468	—	2,200	ALL SHOWN	2-10, 1A-6A, 8A, 1B, 7B, 2C-5C, 7C-9C, 6D, 3E, 5E, 6E, 3F, 5F, 3G, 5G, 11G, 3H
								.468	.250	1,500	ALL SHOWN	11-14, 9A-13A, 9B, 11C, 12C, 11D, 12D, 11F

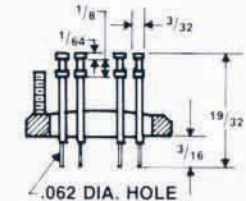
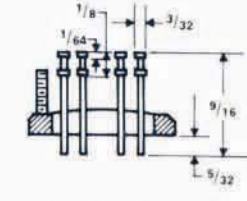
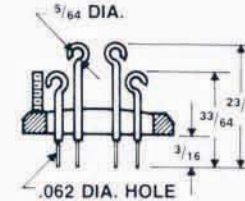
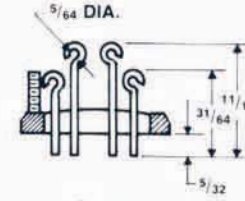
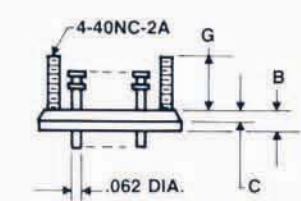


PS62

PP62

HS62

HP62



LS62

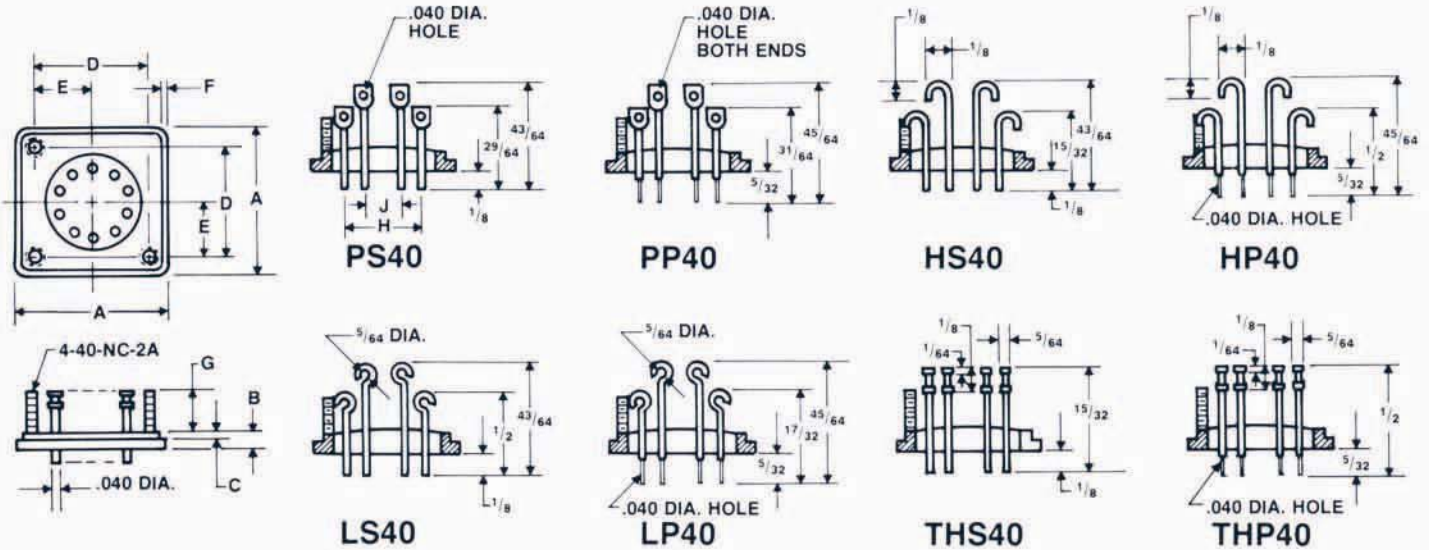
LP62

THS62

THP62

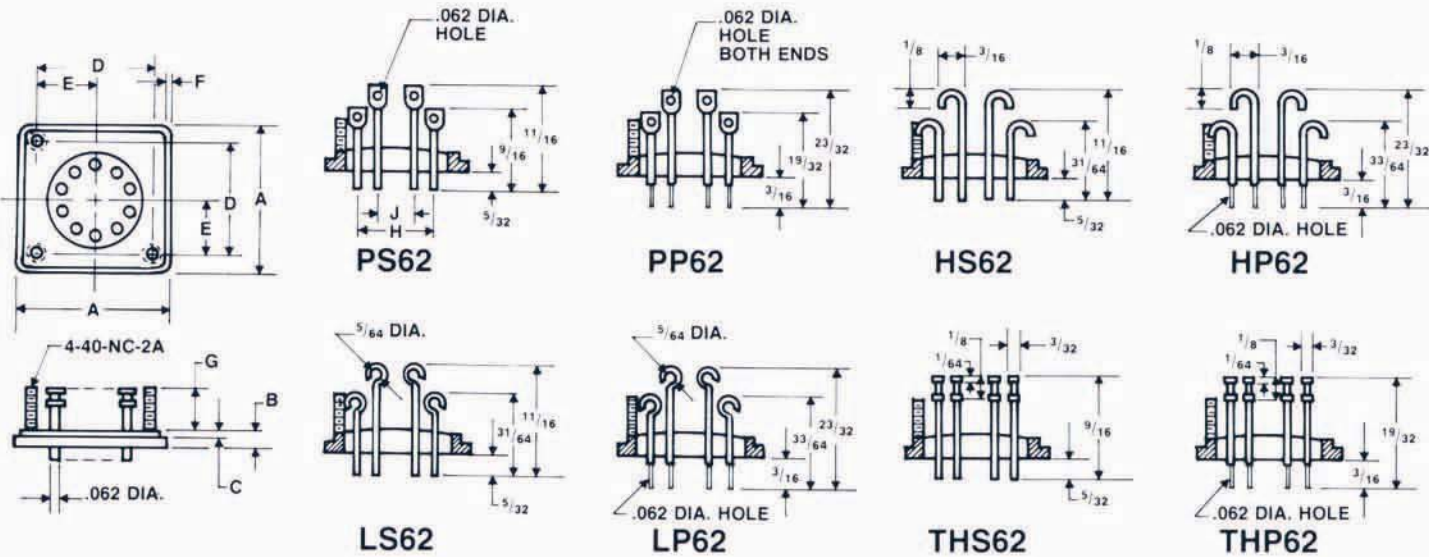
SOLID GLASS — .062 DIA. ELECTRODES

Body	A	B	C	D	E	F	G	H	J	Voltage R.M.S.	Types Available	Patterns Available
2809	.938	.093	.062	.750	.375	.031	.375	.468	—	1,500	All Shown	2-8, 1A-6A, 1B-7B, 2C-9C, 3E, 5E, 6E, 3F, 5F, 3G, 3H



SOLID GLASS — .040 DIA. ELECTRODES

Body	A	B	C	D	E	F	G	H	J	Voltage R.M.S.	Types Available	Patterns Available
2853	.835	.093	.031	.620	.310	.031	.250	.375	—	1,500	All Shown	2-10, 1A-6A, 8A, 1B-7B, 2C-5C, 7C-9C, 6D, 3E, 5E, 6E, 3F, 5F, 3G, 5G, 11G, 3H



SOLID GLASS — .062 DIA. ELECTRODES

Body	A	B	C	D	E	F	G	H	J	Voltage R.M.S.	Types Available	Patterns Available
2853	.835	.093	.031	.620	.310	.031	.250	.375	—	1,800	All Shown	2-8, 1A-6A, 1B-7B, 2C-9C, 3E, 5E, 6E, 3F, 5F, 3G, 3H



AN HCC INDUSTRIES
COMPANY **hcc**

HERMETIC SEAL CORP.

4232 Temple City Blvd., Rosemead, CA 91770-1592 • Tel: (626) 443-8931 • FAX: (626) 443-6610